



**KRION 6D**

**KRION 6D NEO**



+91-73974 44636

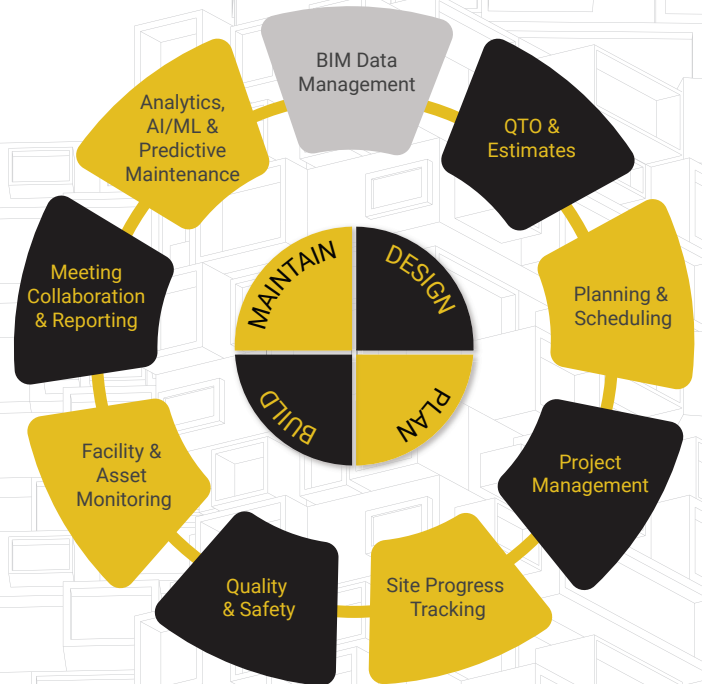
India

krion6d.com

# INTRODUCTION

Krion6D is a complete IT solution for the Construction/Infrastructure industry based on the concept of "Digital Twin." The Krion6D module is an integrated cloud platform to manage data models, people, process, and assets throughout the lifecycle of a construction project. The module has predictive analytic features to anticipate and forecast in all the stages of Construction/Infra. It works on public, private, and virtual cloud infrastructure and uses Artificial Intelligence for operational insights and efficiency.

**ENHANCE THE EFFICIENCY  
WITH COLLABORATION  
BETWEEN DESIGN AND  
EXECUTION TEAMS**



## OUR SOLUTIONS



### **Design Project Management**

Minimize risks and unexpected costs and ensure your vision comes to life with designs that easily support BIM workflows



### **Digital Construction Platform**

Seamlessly connect the office to the field and easily manage design data and technology assets across project sites, connect with us.



### **Construction Project Management**

Connect and synchronize teams across the project lifecycle with scheduling, project controls, and collaboration.



### **Construction Data and Intelligence**

Construction Management Software Limited are one of the leading suppliers and developers of construction estimating.

# COLLABORATIVE DIGITAL DELIVERY PLATFORM FOR BIM PROJECTS



## Issues

Identifying and documenting the problems and concerns early in the project lifecycle to avoid wastage and keep the project on track.

## RFI

Provide a structured process for raising requests and ensure that the organization makes informed decisions when selecting suppliers, vendors, or partners and keep the team well informed of the Project to track the decisions.

## Dashboards & Reports

Enabling real-time project monitoring through a dashboard is a powerful way to keep track of the progress and performance of a project. This approach allows project managers and stakeholders to access up-to-the-minute data and key metrics, which can help in making informed decisions, identifying issues early, and ensuring that the project stays on track. Project Reports provides an overview of the design's requirements, data availability and Final output captured in a systematic Format.

## Task List & Gantt Chart

Unified task-based review of all activities is a comprehensive approach to examining and managing tasks and activities within a project, organization, or any context where numerous tasks are involved. Track the progress of a project, coordinate design and review processes, and manage project schedules effectively as well as provides a visual representation of tasks, milestones, and their respective timelines.

## Transmittals & Submittals

Share a centralized repository of project documents, ensuring that all stakeholders have access to the latest versions. This promotes document control and reduces the risk of using outdated or incorrect information.

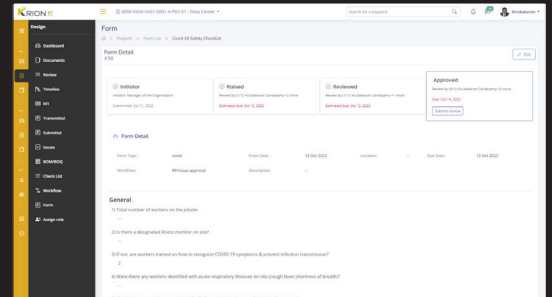
## Forms

Standardize the collection of project data and information from Vendors and Sub contractors and monitoring the same under the workflow.

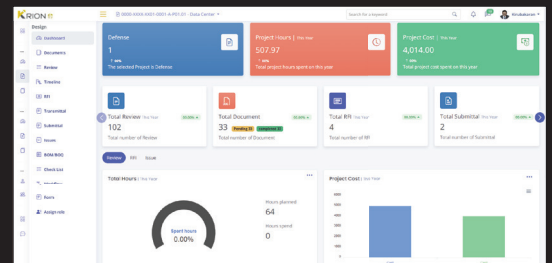
## Chat

Streamline collaboration, communication, and task management within a project team facilitates real-time discussions, updates, and coordination, making it easier for team members to work together efficiently.

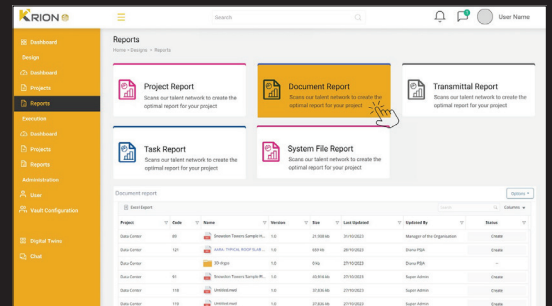
## ISSUES



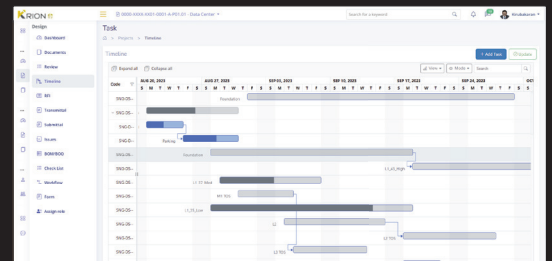
## DASHBOARDS



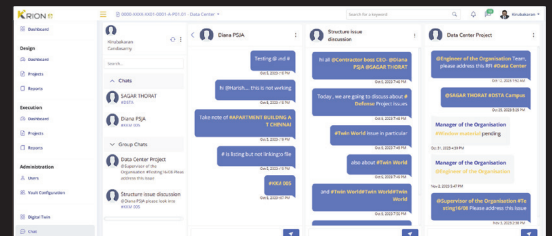
## REPORTS



## GANTT CHART



## CHAT





## Mark-Ups and Commenting

Provides effective collaboration among team members. Multiple stakeholders can contribute their insights, suggestions, or feedback by adding their own markups and comments to a shared document in the form of lines, shapes, arrows, text, or highlights

## Visualization with Digital Twin

Direct viewing of 2D and 3D models enhances workflow efficiency by reducing the steps required to access and analyze design data. Users can access and view design models seamlessly within the platform, eliminating the need to switch between different software tools. The viewer is not limited to Autodesk files; it also facilitates viewing MS Office, PDF, and IFC files.

## Compare

Identify and highlight changes between different versions of design documents. This is essential for tracking modifications made during the design and development process, helping stakeholders quickly understand what has been altered.

## Multi model View

Coordinate various design disciplines, such as architectural, structural, mechanical, and electrical systems. This helps identify clashes, conflicts, or inconsistencies early in the design phase, leading to smoother project execution.

## Clash Detection

Minimizes design errors by identifying and highlighting clashes and conflicts early in the project. This proactive approach prevents costly errors and rework during construction. Also streamlines the design review process, allowing project teams to resolve issues promptly which leads to faster project delivery and minimizes construction delays.

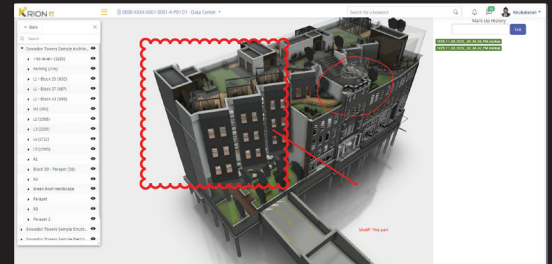
## Timeline

Assists in sequencing and scheduling by allowing project managers and teams to create and visualize project schedules as well as helps establish project milestones, deadlines, and critical paths.

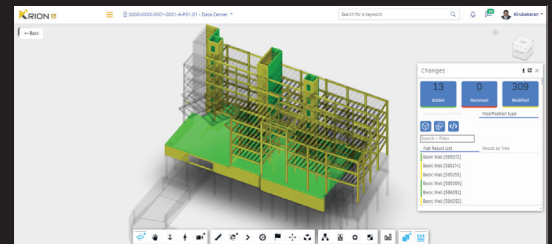
## BIM Data Analytics

Allows project stakeholders to make informed decisions based on real-time data and insights. It provides a comprehensive view of the project, enabling better choices in design, resource allocation, and risk management.

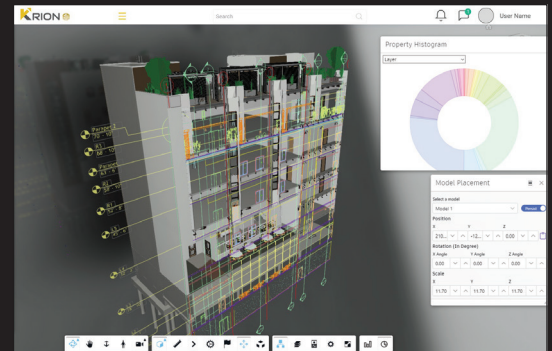
## MARK-UPS AND COMMENTING



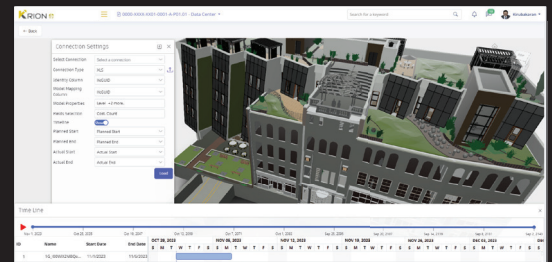
## COMPARE



## MULTI MODEL VIEW



## TIMELINE



## BIM DATA ANALYTICS

